

Team Sexplain - Perspectives for an inclusive Sex Ed

Yolanda Adamson Team Sexplain



Yolanda is a queer, non-monogamous, sex witch and an inter-sectional feminist. She believes in radical softness as a weapon (as advocated by Lora Mathis).

She believes that inclusive sex ed and sexual health is important to individuals, relationships and societal well-being. But also that everyone should have the ability and responsibility to take charge of their sexual health and sexual pleasure.

Becky Lund Harket Team Sexplain



Becky strongly believes that the quality of the relationships we have determine the quality of our lives and that young people who receive discursive, inclusive and positive SRE will go on to lead happier and healthier lives. Becky's academic study has focussed on sexual pleasure, sexual harassment, LBGT+ prejudice and societal attitudes towards sex.

Sophie Whitehead Teacher MA Student



Sophie is an ex-secondary school teacher with a passion for developing honest and inclusive RSE. Sophie found the content of the sex education lessons to be dull, unhelpful and even exclusionary at times.

Last year, Sophie worked on various projects planning sessions for young people about sex, pornography, #metoo and more. Sophie is studying for an MA in Social Justice and Education, with a focus on on pleasure and feminism in RSE.

Team Sexplain - Perspectives for an inclusive Sex Ed

Alex Greenwood TIGER Bristol

Alex is one of the directors of TIGER, a not-for-profit workers co-operative based in Bristol, working predominantly with young people to challenge gender inequality in society through workshops and exhibitions.



Adam Fouracre Stand Against Violence

Adam founded an anti-violence charity in 2005 following the murder of his brother Lloyd Fouracre. Stand Against Violence aims to prevent what happened to Lloyd from happening to other young people.

Through delivery of workshops to young people the charity has seen positive effects. The Centre for Public Health (CPH) found in their 2014 evaluation that young people were less likely to resort to violence as a means of conflict resolution following SAV's input.



Matilda Brindle UCL & Institute of Zoology

Matilda is a PhD researcher based at UCL and the Institute of Zoology. She is interested in the evolution and function of sexual behaviour and morphology in animals, particularly primates.

Matilda has previously published research on the evolution of the penis bone (baculum) in mammals. Her current research explores the form, evolution and function of masturbation across the primate order.



Team Sexplain - Perspectives for an inclusive Sex Ed



Emily Burt Fumble

Emily is a journalist, and co-founder of Fumble – a website offering inclusive, healthy sex education for the digital age.

Run by young people, for young people, Fumble seeks to fill the hefty gap left by inadequate sex and relationships education (SRE) in the UK and beyond, giving young people amazing, relevant social content to read, view and share.



Charlotte Hart Team Sexplain

Charlie Hart is a primary school teacher and charity worker. She is also a Board member for Fumble. She believes strongly that inclusive, discursive education is fundamental in helping young people navigate today's Google-heavy world.

As a bisexual wheelchair user, it is often difficult to get her to stop talking about sexuality, sex and contraception. She has directly experienced how asking questions and taking charge if her own learning supports healthy self-image and mental health.



David Hopkinson METRO Charity

David is the Boys and Young Men project lead, which provides holistic Relationship & Sexual Health, Gender, Identity, and masculinity mentoring and support for boys and young men who show harmful sexual behaviours.

Previously David was a volunteer for Great Men - an organisation promoting healthy masculinity in schools through interactive workshops. David has an MA in Education and International Development from UCL and wrote his dissertation on school related gender based violence.

Team Sexplain - Perspectives for an inclusive Sex Ed

Jemmar Samuels Brunel University

22-year-old Afro-Jamaican intersectional feminist and activist. She is a student at Brunel University London where she studies Politics and Sociology.

She is currently on her placement year, working to close the BME attainment gap at the university.



Saskia Hoskins King's College London

Saskia is a PhD research student at the Department for International Development at King's College, London, where she researches adolescent pregnancy in Peru. She has an MSc in Development Studies from SOAS, and an MPhil in Latin American Studies from Oxford University.

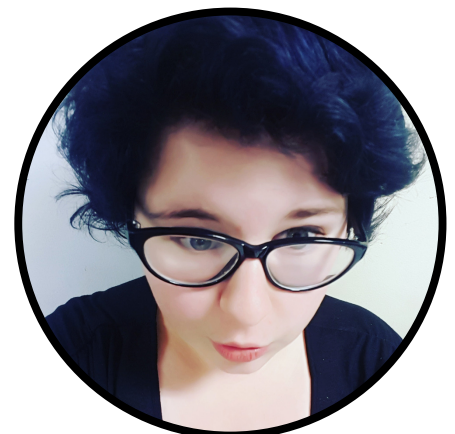
She has twice been to Peru where she conducted ethnographic research regarding knowledge and attitudes towards contraception, and conceptualisations of teenage pregnancy. She also works for Christian Aid and Birmingham-based maternal health charity, Ammalife.



Jessi Borg Team Sexplain

College student who at 14 realised that she was not heterosexual and had to rely on secondary sources for information.

Jessi will talk about her experience and what she would like included within Sex Education.



Team Sexplain - Perspectives for an inclusive Sex Ed



Milly Evans Campaigner

Milly, 19, is an award-winning campaigner for better sex education, a member of the Family Planning Association Youth Council and a former Stonewall Young Campaigner.

She is also founder of ISupportSexEducation.com and has written for online publications such as [The i Paper](http://TheiPaper.com) and Patient.info



Elena Veris Reynolds Team Sexplain

Elena is an 18-year old student who has campaigned for compulsory SRE as well as having sat on Girlguiding's national youth panel, Advocate, where she campaigned for the rights of young women and girls.

She identifies as queer and thinks high-quality, inclusive SRE is one of the keys to a better world.



Gayathiri Kamalakantha IntoUniversity

Gaya is a writer and educator who wants 'unembarrassable' to be the motto of all those who teach and facilitate sex and relationship education.

During her master's degree she explored the relationship between worship of the divine and sexual and sensual human connections in 14th century Hindu practice. Her most common learning in life has been that there is always something more to be learnt!ur text

Team Sexplain - Perspectives for an inclusive Sex Ed

Rachel Downes Fine Art Model

As a 25 year old fine art model, Rachyy spends the majority of her time nude and is incredibly comfortable in her own skin. She hopes to empower other men and women to feel the same.



She is passionate about body positivity, and how a positive outlook on yourself can affect how you think and feel with other aspects of life, including sex, relationships, learning and work!

Blackheath Students

Eden Chambers (*Year 9*) has a particular interest in feminism in relation to religion.

Ingrid Berdal (*Year 12*) spent last summer researching sex education at Kings College London.

Rosie Futers (*Year 8*) has a particular interest in LGBTQ inclusion.

Zoe Hadshell (*Year 13*) has a particular interest in feminism in literature.

Maria Turek (*Year 9*) has a particular interest in breaking the gender binary.

Emma Chan Team Sexplain

Emma is a Junior Doctor with an interest in sexual health who blogs at www.squishsquashsquelch.com



Team Sexplain - Perspectives for an inclusive Sex Ed



Ibraheem & Dias StraightJacket

Students from Lambeth - who have had enough of being pushed into gender binaries by schools.

Fellows of the Advocacy Academy - a transformational Social Justice Fellowship for young people who are passionate about making a difference in the world. Across six intense months, they work with coaches to create a direct action campaign to make a difference.

The campaign challenges ways that schools enforce rigid binaries around femininity and masculinity, which they have both been personally impacted by. The campaign aims to push schools to teach about gender, non-conforming people and queerness, so that schools can be the safe places, like they could have been for them.



Bryony Walker Level Up & Mazi Mas

Campaigns Director of Level Up & Co-founder of Mazi Mas. Level Up is a new feminist organisation whose mission is to build a community of feminists who can work together to end sexism in the UK. Their vision is a world where everyone is free to achieve their potential regardless of their gender.

Mazi Mas is an award-winning social enterprise that provides training and employment to help women build careers in the food industry. Their chefs are from migrant and refugee backgrounds as diverse as the city we call home, and bring decades of culinary experience to our multi-ethnic, multi-lingual, and multi-talented team.



Amelia, Hazel & Dolly Team Sexplain

